



Potential Consequences

Failure to adhere to any of the policies & guidelines presented may be grounds for any of the following (or a combination of these things):

- Ticketing
- Towing at the owner's expense
- Suspension or revocation of lunch pass and/or parking pass
- Other school consequences (lunch detention, after-school detention, ISS, etc.)

General Rules

- ❑ Parking spaces may NOT be shared (or "transferred") to other students (the only exception is for siblings—if siblings share a spot, each sibling must be registered as a driver).
- ❑ Only registered vehicles may be parked in assigned spaces (no more than 2 vehicles registered to each space)
 - If there are changes, be sure to report to Front Office immediately to avoid tickets and fines

General Rules

- ❑ GLHS parking hangtags must be displayed from rear-view mirror with the hang tag information facing out
- ❑ Fines must be paid within 3 days (or face additional fines and other consequences)

Safety Rules



- ❑ Seatbelts should be worn properly by all vehicle occupants; driving speeds should not exceed 10 mph in parking lots
- ❑ Code of Conduct applies to all vehicles, student drivers, passengers, and contents while on school grounds
- ❑ Student vehicles are subject to search and seizure per WCPSS Board Policy
- ❑ Vehicles must be parked within the lines



Handicapped Parking

- ❑ Must have valid handicapped permit from DMV and a GLHS parking pass to park in handicap spaces
- ❑ Permit must be for a student using the vehicle
- ❑ Register vehicle as usual and pay for spot as usual

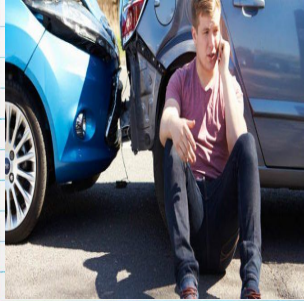


Handicapped Parking

- ❑ Pay for parking spot as usual
- ❑ Follow all parking rules
- ❑ Normal expectations, rules & consequences apply
- ❑ If you require a handicap space, please contact front office for next steps



If you are involved in an accident...



1. *Stop your vehicle & get out.*
2. *Move to a safe area (if possible).*
3. *Call police (if it happens on campus, contact the front office/SRO).*
4. *Contact parents*
5. *Check on others involved.*

(Courtesy of Esurance)

IMPORTANT !!!

- ❑ *If you are involved in any accident (major or minor), you need to report it.*
- ❑ *Furthermore, everyone involved must stay at the scene.*
- ❑ *Failing to report incidents on campus may also result in temporary or permanent suspension of parking privileges along with other consequences.*

Drive Safely, Gators

